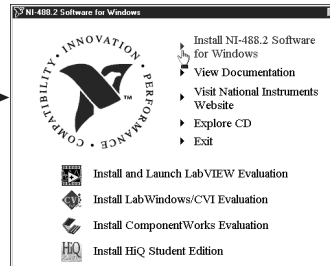


GETTING STARTED

PCI-8212 for Windows 2000/Me

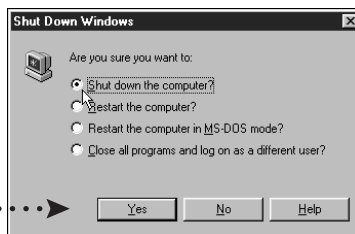
1

Insert the NI-488.2 CD, then choose **Install NI-488.2 Software for Windows**.



2

Shut down, then power off computer.



Power Off
Computer

3

Install hardware* and cables, then power on computer.



Power On
Computer

* **For Help** installing your hardware, refer to the *PCI-GPIB* topic in the *GPIB Hardware Guide* (available on the NI-488.2 for Windows CD through *View Documentation*).

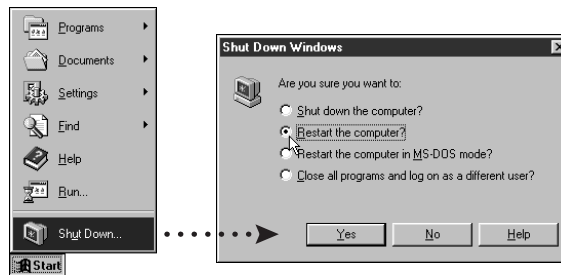


Windows automatically installs the driver.

Windows automatically installs a driver for the Ethernet adapter from its own library of drivers. Refer to the installation guide to update the device driver.*



Restart computer, then connect to your network.



* **For Help** updating your driver, refer to the *PCI/PXI Ethernet Adapters Installation Guide* (available on the PCI/PXI Ethernet Adapters CD). The installation guide also contains cabling instructions and troubleshooting tips.

6

Run NI-488.2 Getting Started Wizard.





www.ni.com/support
www.ni.com/ask

Tel: (512) 795-8248 • Fax: (512) 683-5678 • ftp.ni.com

© Copyright 2000 National Instruments Corporation. All rights reserved. Product and company names mentioned herein are trademarks or trade names of their respective companies.



322727A-01

Jul00